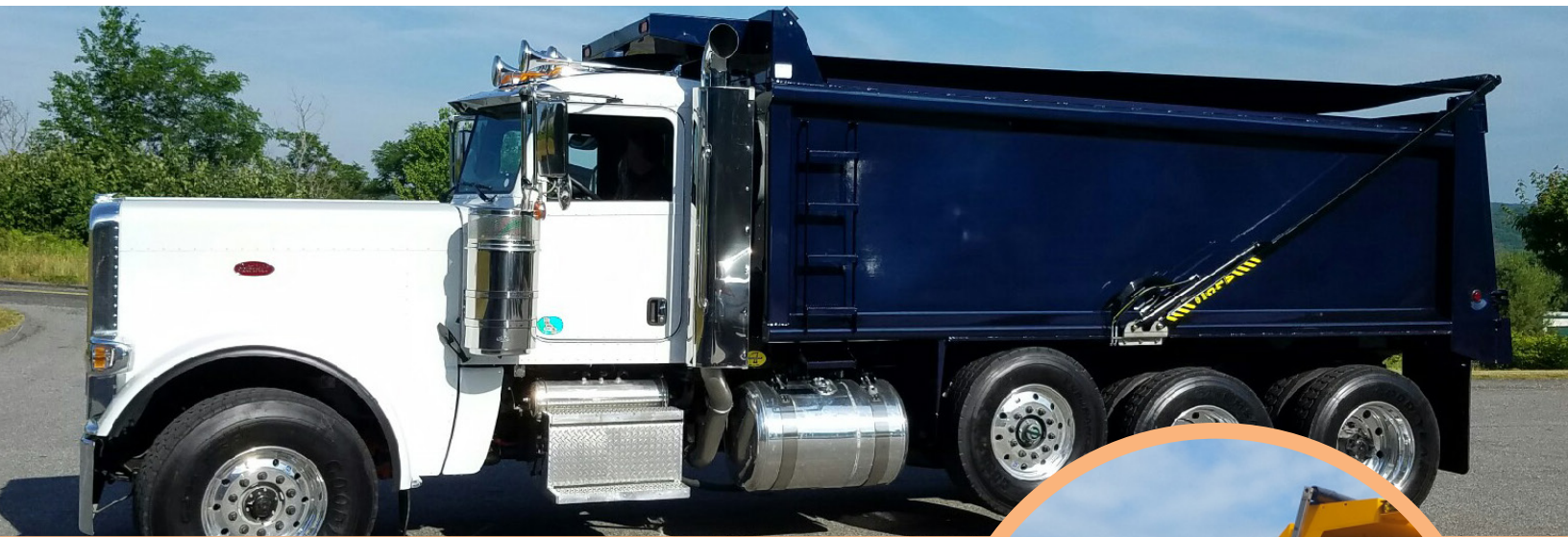


Roll-Rite® ALC-DB Series

Heavy Duty Steel Tarp Systems with Hydra-Lock™ Arms



...For Construction & Municipal
Dump Bodies



Roll-Rite® ALC-DB Series



Pivot Mount with Arch



Heavy Duty Steel Arms



Tarp Spool



Controls

Heavy Duty Steel Tarpers for Dump Bodies, Built to Last.

DB-11 System Features:

- **Heavy Duty Steel Pivot with Arch:** Powder coated 3/8" laser cut steel arch. Formed Pivot Mounts with 1/2" Teflon lined steel spherical bearings. UHMW self-lubricating guide blocks stabilize arm operation for precision arm movement while reducing wear and tear of the pivot
- **Heavy Duty Steel Arms:** Hydraulic arms 'Lower & Lock-Down' on top of truck body. Powder Coated 45-Degree Pivot Arm tubing is 2" x 1-1/2" x 11 gauge. Corrosion resistant pivot cylinders feature 1-3/4" bore and 17" stroke with 1-1/4" piston rod
- **Tarp Spool Assembly:** 4-1/2" extruded aluminum torsion tube assembly
- **2-Year Warranty:** (excluding tarp)

DB-11 SS System Features:

- **Heavy Duty Stainless Steel Pivot Arch:** 304 stainless steel 3/8" laser cut arch. Formed pivot mounts with 1/2" Teflon lined steel spherical bearings. UHMW self-lubricating guide blocks stabilize arm operation for precision arm movement while reducing wear and tear of the pivot
- **Heavy Duty Stainless Steel Arms:** Hydraulic arms 'Lower & Lock-Down' on top of truck body. Stainless steel 45-degree pivot arm tubing is 2" x 1-1/2" x 11 gauge. Corrosion resistant stainless steel pivot cylinders feature 1-3/4" bore and 17" stroke with 1-1/4" piston rod
- **Tarp Spool Assembly:** 4-1/2" extruded aluminum torsion tube assembly
- **3-Year Warranty:** (excluding tarp)

DB-20 System Features:

- **Heavy Duty Steel Pivot with Arch:** Powder coated 3/8" laser cut steel arch. Formed Pivot Mounts with 1/2" Teflon lined steel spherical bearings. UHMW self-lubricating guide blocks stabilize arm operation for precision arm movement while reducing wear and tear of the pivot
- **Heavy Duty Steel Arms:** Hydraulic arms 'Lower & Lock-Down' on top of truck body. Powder Coated 45-Degree Pivot Arm tubing is 2-1/2" x 1-1/2" x 11 gauge. Corrosion resistant pivot cylinders feature 1-3/4" bore and 17" stroke with 1-1/4" piston rod
- **Tarp Spool Assembly:** 4-1/2" extruded aluminum torsion tube assembly
- **2-Year Warranty:** (excluding tarp)

Operates with Truck Hydraulics:

Operates from truck's central hydraulics. Electric-over-hydraulic pump & controls option available.

- Hydraulic Controls



- Electric-Over-Hydraulic Option



DB-11

For Dump Bodies up to 11 Feet in Length (Part# 78040):

- Heavy Duty Steel Arms with Hydraulic Pivot Cylinders
- Heavy Duty Steel Pivot Mount with Arch
- Tarp Spool Assembly



DB-11 SS

For Dump Bodies up to 11 Feet in Length (Part# 78140):

- Heavy Duty Stainless Steel Arms with Hydraulic Pivot Cylinders
- Heavy Duty Stainless Steel Pivot Mount with Arch
- Tarp Spool Assembly



DB-20

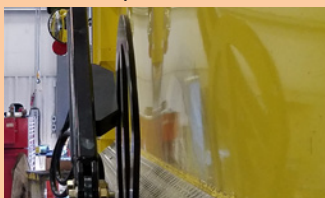
For Dump Bodies from 12 Feet to 20 Feet in Length (Part# 78150):

- Heavy Duty Steel Arms with Hydraulic Pivot Cylinders
- Heavy Duty Steel Pivot Mount with Arch
- Tarp Spool Assembly

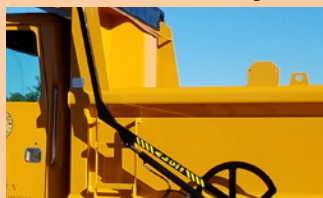


- Optional bent arm

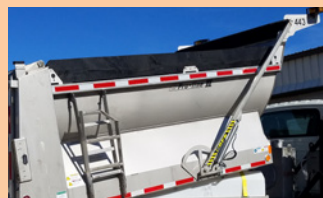
- UHMW guide blocks reduce pivot wear



- Optional bent arm keeps arms clear of loading zone

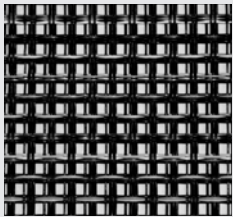


- Optional: DB-20 is also available in stainless steel





Tarps by Roll-Rite®



ALC HD Mesh

- Load Type: Aggregates, General
- Fabric: 19.5 oz. vinyl coated polyester, 4x4 weave (1000D x 1000D), tear strength 138lbs x 105lbs, tensile strength (grab) 606.8lbs x 571.4lbs
- Key Benefit: Strong, durable yet breathable one-piece construction



ALC HD Vinyl (22 oz)

- Load Type: Moisture or temperature sensitive
- Fabric: 22 oz. PVC coated polyester, 16x16 weave (1500Dx1500D), tear strength 145lbs x 145lbs, tensile strength 500lbs x 500lbs
- Key Benefit: Keep loads mostly dry or maintain temperature range

Roll-Rite® ALC Series Replacement Tarps

ALC HD Mesh:

Part #	Description
78114	ALC HD Mesh DB-11 Tarp 96" x 14'
78814	ALC HD Mesh DB-20 Tarp 96" x 24'

ALC HD Vinyl:

Part #	Description
78831	ALC HD Vinyl DB-11 Tarp 96" x 14'
78835	ALC HD Vinyl DB-11 Tarp 100" x 14'
78833	ALC HD Vinyl DB-20 Tarp 100" x 24'
78834	ALC HD Vinyl DB-20 Tarp 96" x 24'
78836	ALC HD Vinyl DB-20 Tarp 100" x 18'
78838	ALC HD Vinyl DB-20 Tarp 96" x 18'



A Safe Fleet Brand

RollRite.com • 800.297.9905



780-RR-ALC-DBSeries-4PG-20200311

Copyright ©2019 Safe Fleet and its subsidiaries. All rights reserved. No part of this publication may be reproduced by any means without written permission from Safe Fleet. The information in this publication is believed to be accurate. However, Safe Fleet does not make any representation or warranty to that effect and does not assume responsibility for any consequences resulting from use of such information. Revisions or new editions of the publication may be issued (or not issued) in our discretion to incorporate such changes.

1.877.630.7366
safefleet.net

SAFE FLEET
Driving Safety Forward™